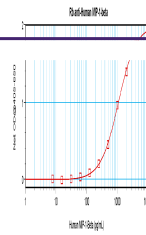

Product Datasheet

CCL4 Antibody (orb1272371)

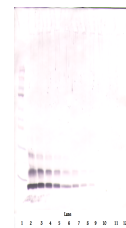
Description	CCL4 Antibody
Species/Host	Rabbit
Reactivity	Human
Conjugation	Unconjugated
Tested Applications	ELISA, NeA, WB
Immunogen	Produced from sera of rabbits pre-immunized with highly pure (>98%) recombinant hMIP-1-beta.
Target	CCL4
Form/Appearance	Lyophilized
Concentration	batch dependent
Storage	MIP-1B antibody is stable for at least 2 years from date of receipt at -20°C. The reconstituted antibody is stable for at least two weeks at 2-8°C. Frozen aliquots are stable for at least 6 months when stored at -20°C. Avoid repeated freeze-thaw cycles.
Note	For research use only
Clonality	Polyclonal
Uniprot ID	P13236
NCBI	P13236
Dilution Range	Neutralization: To yield one-half maximal inhibition [ND50] of the biological activity of hMIP-1-beta (50.00 ng/mL), a concentration of 1.75 - 3.0 µg/mL of this antibody is required. ELISA:To detect hMIP-1-beta by direct ELISA (using 100 µL/well antibody solution) a concentration of at least 0.5 µg/mL of this antibody is required. This antigen affinity purified antibody, in conjunction with compatible secondary reagents, allows the detection of 0.2 - 0.4 ng/well of recombinant hMIP-1-beta.Sandwich:To detect hMIP-1β by sandwich ELISA (using 100 µL/well antibody solution) a concentration of 0.5 - 2.0 µg/mL of this antibody is required. This antigen affinity purified antibody, in conjunction with our Biotinylated Anti-Human MIP-1βas a detection antibody, allows the detection of at least 0.2 - 0.4 ng/well of recombinant hMIP-1β. Western Blot:To detect hMIP-1-beta by Western Blot analysis this antibody can be used at a concentration of 0.1 - 0.2 µg/mL. Used in conjunction with compatible secondary reagents the detection limit for recombinant hMIP-1-beta is 1.5 - 3.0 ng/lane, under either reducing or non-reducing conditions.
Expiration Date	12 months from date of receipt.



To detect Human MIP-1-beta by sandwich E...



To detect Human MIP-1-beta by Western Bl...



To detect Human MIP-1-beta by Western Bl...