
Product Datasheet

CCL4 Antibody (Biotin) (orb1272370)

Description

CCL4 Antibody (Biotin)

Species/Host

Rabbit

Reactivity

Human

Conjugation

Biotin

Tested

ELISA, WB

Applications
Immunogen

Produced from sera of goats pre-immunized with highly pure (>98%) recombinant hMIP-1-β (human MIP-1-β).

Target

CCL4

Form/Appearance

Lyophilized

Concentration

batch dependent

Storage

MIP-1B antibody is stable for at least 2 years from date of receipt at -20°C. The reconstituted antibody is stable for at least two weeks at 2-8°C. Frozen aliquots are stable for at least 6 months when stored at -20°C. Avoid repeated freeze-thaw cycles.

Note

For research use only

Application notes

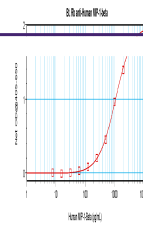
ELISA: Sandwich: To detect hMIP-1β by sandwich ELISA (using 100 μL/well antibody solution) a concentration of 0.25 - 1.0 μg/mL of this antibody is required. This biotinylated polyclonal antibody, in conjunction with our Polyclonal Anti-Human MIP-1β (XP-5235) as a capture antibody, allows the detection of at least 0.2 - 0.4 ng/well of recombinant hMIP-1β. Western Blot: To detect hMIP-1-β by Western Blot analysis this antibody can be used at a concentration of 0.1 - 0.2 μg/mL. Used in conjunction with compatible secondary reagents the detection limit for recombinant hMIP-1-β is 1.5 - 3.0 ng/lane, under either reducing or non-reducing conditions.

Clonality

Polyclonal

Uniprot ID
[P13236](#)
NCBI
[P13236](#)
Dilution Range

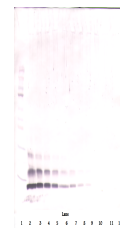
ELISA: Sandwich: To detect hMIP-1β by sandwich ELISA (using 100 μL/well antibody solution) a concentration of 0.25 - 1.0 μg/mL of this antibody is required. This biotinylated polyclonal antibody, in conjunction with our Polyclonal Anti-Human MIP-1β (XP-5235) as a capture antibody, allows the detection of at least 0.2 - 0.4 ng/well of recombinant hMIP-1β. Western Blot: To detect hMIP-1-β by Western Blot analysis this antibody can be



To detect Human MIP-1-beta by sandwich E...



To detect Human MIP-1-beta by Western Bl...



To detect Human MIP-1-beta by Western Bl...