

## Product Datasheet

### Cxcl2 Antibody (orb1272367)

**Description**
**Cxcl2 Antibody**
**Species/Host**

Rabbit

**Reactivity**

Mouse

**Conjugation**

Unconjugated

**Tested**

ELISA, NeA, WB

**Applications**
**Immunogen**

Produced from sera of rabbits pre-immunized with highly pure (>98%) recombinant mMIP-2 (murine Macrophage Inflammatory Protein-2).

**Target**

Cxcl2

**Form/Appearance**

Lyophilized

**Concentration**

batch dependent

**Storage**

MIP-2 antibody is stable for at least 2 years from date of receipt at -20°C. The reconstituted antibody is stable for at least two weeks at 2-8°C. Frozen aliquots are stable for at least 6 months when stored at -20°C. Avoid repeated freeze-thaw cycles.

**Note**

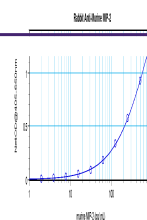
For research use only

**Clonality**

Polyclonal

**Uniprot ID**
**P10889**
**NCBI**
**P10889**
**Dilution Range**

Neutralization: To yield one-half maximal inhibition [ND50] of the biological activity of mMIP-2 (15 ng/mL), a concentration of 0.52 - 0.9 µg/mL of this antibody is required. ELISA: To detect mMIP-2 by direct ELISA (using 100 µL/well antibody solution) a concentration of at least 0.5 µg/mL of this antibody is required. This antigen affinity purified antibody, in conjunction with compatible secondary reagents, allows the detection of 0.2 - 0.4 ng/well of recombinant mMIP-2. Sandwich: To detect mMIP-2 by sandwich ELISA (using 100 µL/well antibody solution) a concentration of 0.5 - 2.0 µg/mL of this antibody is required. This antigen affinity purified antibody, in conjunction with our Biotinylated Anti-Murine MIP-2 as a detection antibody, allows the detection of at least 0.2 - 0.4 ng/well of recombinant mMIP-2. Western Blot: To detect mMIP-2 by Western Blot analysis this antibody can be used at a concentration of 0.1 - 0.2 µg/mL. Used in conjunction with compatible secondary reagents the detection limit for recombinant mMIP-2 is 1.5 - 3.0 ng/lane, under either reducing or non-reducing conditions.



To detect  
mMIP-2 by  
sandwich  
ELISA (usin...



To detect  
mMIP-2 by  
Western Blot  
analysi...



To detect  
mMIP-2 by  
Western Blot  
analysi...