
Product Datasheet

CCL20 Antibody (orb1272363)

Description

CCL20 Antibody

Species/Host

Rabbit

Reactivity

Human

Conjugation

Unconjugated

Tested Applications

ELISA, WB

Applications

Produced from sera of rabbits pre-immunized with highly pure (>98%) recombinant hMIP-3-alpha (human Macrophage Inflammatory Protein-3-alpha).

Target

CCL20

Form/Appearance

Lyophilized

Concentration

batch dependent

Storage

MIP-3a antibody is stable for at least 2 years from date of receipt at -20°C. The reconstituted antibody is stable for at least two weeks at 2-8°C. Frozen aliquots are stable for at least 6 months when stored at -20°C. Avoid repeated freeze-thaw cycles.

Note

For research use only

Clonality

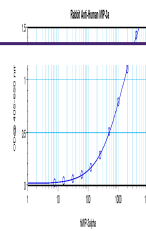
Polyclonal

Uniprot ID
P78556
NCBI
P78556
Dilution Range

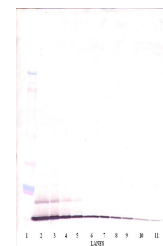
ELISA: To detect hMIP-3-alpha by direct ELISA (using 100 µL/well antibody solution) a concentration of at least 0.5 µg/mL of this antibody is required. This antigen affinity purified antibody, in conjunction with compatible secondary reagents, allows the detection of 0.2 - 0.4 ng/well of recombinant hMIP-3-alpha. Sandwich: To detect hMIP-3α by sandwich ELISA (using 100 µL/well antibody solution) a concentration of 0.5 - 2.0 µg/mL of this antibody is required. This antigen affinity purified antibody, in conjunction with our Biotinylated Anti-Human MIP-3α as a detection antibody, allows the detection of at least 0.2 - 0.4 ng/well of recombinant hMIP-3α. Western Blot: To detect hMIP-3α by Western Blot analysis this antibody can be used at a concentration of 0.1-0.2 µg/mL. Used in conjunction with compatible secondary reagents the detection limit for recombinant hMIP-3α is 1.5-3.0 ng/lane, under either reducing or non-reducing conditions.

Expiration Date

12 months from date of receipt.



To detect Human MIP-3-alpha by sandwich ...



To detect Human MIP-3-alpha by Western Bl...



To detect Human MIP-3-alpha by Western Bl...