

---

## Product Datasheet

### Kitl Antibody (orb1272320)

**Description**

Kitl Antibody

**Species/Host**

Rabbit

**Reactivity**

Mouse

**Conjugation**

Unconjugated

**Tested Applications**

ELISA, NeA, WB

**Applications**

Produced from sera of rabbits pre-immunized with highly pure (>98%) recombinant mSCF (murine SCF).

**Target**

Kitl

**Form/Appearance**

Lyophilized

**Concentration**

batch dependent

**Storage**

SCF antibody is stable for at least 2 years from date of receipt at -20°C. The reconstituted antibody is stable for at least two weeks at 2-8°C. Frozen aliquots are stable for at least 6 months when stored at -20°C. Avoid repeated freeze-thaw cycles.

**Note**

For research use only

**Clonality**

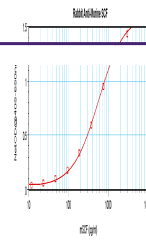
Polyclonal

**Uniprot ID**
[P20826](#)
**NCBI**
[P20826](#)
**Dilution Range**

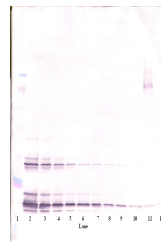
Neutralization: To yield one-half maximal inhibition [ND50] of the biological activity of mSCF (25.0 ng/mL), a concentration of 0.6 - 0.65 µg/mL of this antibody is required. ELISA: To detect mSCF by direct ELISA (using 100 µL/well antibody solution) a concentration of at least 0.5 µg/mL of this antibody is required. This antigen affinity purified antibody, in conjunction with compatible secondary reagents, allows the detection of 0.2 - 0.4 ng/well of recombinant mSCF. Sandwich: To detect mSCF by sandwich ELISA (using 100 µL/well antibody solution) a concentration of 0.5 - 2.0 µg/mL of this antibody is required. This antigen affinity purified antibody, in conjunction with our Biotinylated Anti-Murine SCFas a detection antibody, allows the detection of at least 0.2 - 0.4 ng/well of recombinant mSCF. Western Blot: To detect mSCF by Western Blot analysis this antibody can be used at a concentration of 0.1 - 0.2 µg/mL. Used in conjunction with compatible secondary reagents the detection limit for recombinant mSCF is 1.5 - 3.0 ng/lane, under either reducing or non-reducing conditions.

**Expiration Date**

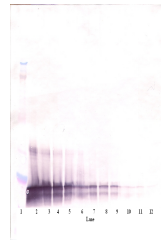
12 months from date of receipt.



To detect mSCF by sandwich ELISA (using ...



To detect mSCF by Western Blot analysis ...



To detect mSCF by Western Blot analysis ...