
Product Datasheet

VEGFA Antibody (Biotin) (orb1272274)

Description

VEGFA Antibody (Biotin)

Species/Host

Rabbit

Reactivity

Human

Conjugation

Biotin

Tested

ELISA, WB

Applications
Immunogen

Produced from sera of rabbits pre-immunized with highly pure (>98%) recombinant hVEGF (human VEGF).

Target

VEGFA

Form/Appearance

Lyophilized

Concentration

batch dependent

Storage

VEGF antibody is stable for at least 2 years from date of receipt at -20°C. The reconstituted antibody is stable for at least two weeks at 2-8°C. Frozen aliquots are stable for at least 6 months when stored at -20°C. Avoid repeated freeze-thaw cycles.

Note

For research use only

Application notes

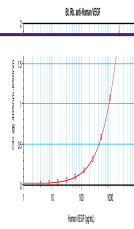
ELISA: Sandwich: To detect hVEGF by sandwich ELISA (using 100 µL/well antibody solution) a concentration of 0.25 - 1.0 µg/mL of this antibody is required. This biotinylated polyclonal antibody, in conjunction with our Polyclonal Anti-Human VEGF (XP-5291) as a capture antibody, allows the detection of at least 0.2 - 0.4 ng/well of recombinant hVEGF. Western Blot: To detect hVEGF by Western Blot analysis this antibody can be used at a concentration of 0.1 - 0.2 µg/mL. Used in conjunction with compatible secondary reagents the detection limit for recombinant hVEGF is 1.5 - 3.0 ng/lane, under either reducing or non-reducing conditions.

Clonality

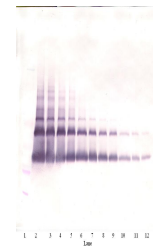
Polyclonal

Uniprot ID
[P15692](#)
NCBI
[P15692](#)
Dilution Range

ELISA: Sandwich: To detect hVEGF by sandwich ELISA (using 100 µL/well antibody solution) a concentration of 0.25 - 1.0 µg/mL of this antibody is required. This biotinylated polyclonal antibody, in conjunction with our Polyclonal Anti-Human VEGF (XP-5291) as a capture antibody, allows the detection of at least 0.2 - 0.4 ng/well of recombinant hVEGF. Western Blot: To detect hVEGF by Western Blot analysis this antibody can be



To detect hVEGF by sandwich ELISA (using...



To detect hVEGF by Western Blot analysis...



To detect hVEGF by Western Blot analysis...