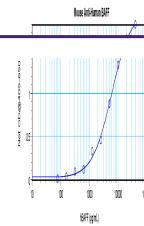


---

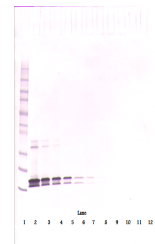
## Product Datasheet

### TNFSF13B Antibody (orb1272250)

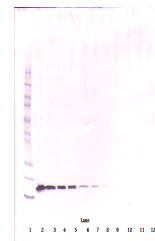
<b>Description</b>	TNFSF13B Antibody
<b>Species/Host</b>	Mouse
<b>Reactivity</b>	Human
<b>Conjugation</b>	Unconjugated
<b>Tested Applications</b>	ELISA, WB
<b>Immunogen</b>	The monoclonal antibody was produced in BALB/c mice using recombinant human BAFF as the immunizing antigen.
<b>Target</b>	TNFSF13B
<b>Form/Appearance</b>	Lyophilized
<b>Concentration</b>	batch dependent
<b>Storage</b>	BAFF lyophilized antibody is stable at room temperature for at least one month and for greater than a year when kept at -20°C. Reconstitute in sterile water to a concentration of 0.1 - 1.0 mg/mL. The antibody is stable for at least six weeks at 2-4°C when reconstituted.
<b>Note</b>	For research use only
<b>Application notes</b>	ELISA: In a sandwich ELISA (assuming 100 µL/well), a concentration of 5.0-6.0 µg/mL of this antibody will detect at least 1000 pg/mL of recombinant human BAFF when used with our biotinylated antigen affinity purified anti-human BAFF (XP-5105Bt) as the detection antibody at a concentration of approximately 0.25-0.50 µg/mL. Western Blot: To detect hBAFF by Western Blot analysis this antibody can be used at a concentration of 0.20-0.40 µg/mL. Used in conjunction with compatible secondary reagents the detection limit for recombinant hBAFF is 2.0-4.0 ng/lane, under non-reducing conditions.
<b>Clonality</b>	Monoclonal
<b>Uniprot ID</b>	<a href="#">Q9Y275</a>
<b>NCBI</b>	<a href="#">Q9Y275</a>
<b>Dilution Range</b>	ELISA: In a sandwich ELISA (assuming 100 µL/well), a concentration of 5.0-6.0 µg/mL of this antibody will detect at least 1000 pg/mL of recombinant human BAFF when used with our biotinylated antigen affinity purified anti-human BAFF (XP-5105Bt) as the detection antibody at a concentration of approximately 0.25-0.50 µg/mL. Western Blot: To detect hBAFF by Western Blot analysis this antibody can be used at a concentration of 0.20-0.40 µg/mL. Used in conjunction with compatible secondary



To a sandwich ELISA (assuming 100ul/well...



To detect hBAFF by Western Blot analysis...



To detect hBAFF by Western Blot analysis...