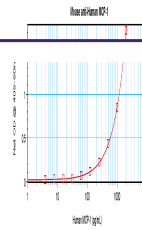


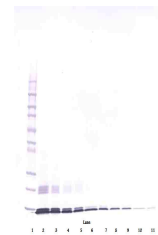
Product Datasheet

CCL2 Antibody (orb1272246)

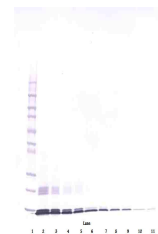
Description	CCL2 Antibody
Species/Host	Mouse
Reactivity	Human
Conjugation	Unconjugated
Tested Applications	ELISA, WB
Immunogen	The monoclonal antibody was produced in BALB/c X ICR F1 mice using recombinant hMCP-1/MCAF as the immunizing antigen.
Target	CCL2
Form/Appearance	Lyophilized
Concentration	batch dependent
Storage	MCP-1 lyophilized antibody is stable at room temperature for at least one month and for greater than a year when kept at -20°C. Reconstitute in sterile water to a concentration of 0.1 - 1.0 mg/mL. The antibody is stable for at least six weeks at 2-4°C when reconstituted.
Note	For research use only
Application notes	ELISA:In a sandwich ELISA (assuming 100 µL/well), a concentration of 2.0-4.0 µg/mL of this antibody will detect at least 300 pg/mL of recombinant human MCP-1 when used with our biotinylated antigen affinity purified anti-human MCP-1 (XP-5218Bt) as the detection antibody at a concentration of approximately 0.5-1.0 µg/mL. Western Blot:To detect hMCP-1 by Western Blot analysis this antibody can be used at a concentration of 0.20-0.40 µg/mL. Used in conjunction with compatible secondary reagents the detection limit for recombinant hMCP-1 is 1.0-2.0 ng/lane, under reducing or non-reducing conditions.
Clonality	Monoclonal
Uniprot ID	P13500
NCBI	P13500
Dilution Range	ELISA:In a sandwich ELISA (assuming 100 µL/well), a concentration of 2.0-4.0 µg/mL of this antibody will detect at least 300 pg/mL of recombinant human MCP-1 when used with our biotinylated antigen affinity purified anti-human MCP-1 (XP-5218Bt) as the detection antibody at a concentration of approximately 0.5-1.0 µg/mL. Western Blot:To detect hMCP-1 by Western Blot analysis this antibody can be used at a concentration of 0.20-0.40



To a sandwich ELISA (assuming 100ul/well...



To detect hMCP-1 by Western Blot analysis...



To detect hMCP-1 by Western Blot analysis...