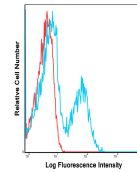


## Product Datasheet

### KLRB1 Antibody (FITC) (orb1271426)

<b>Description</b>	KLRB1 Antibody (FITC)
<b>Species/Host</b>	Mouse
<b>Reactivity</b>	Human
<b>Conjugation</b>	FITC
<b>Tested Applications</b>	FC
<b>Target</b>	KLRB1
<b>Preservatives</b>	Phosphate-buffered aqueous solution, ≤0.09% Sodium azide, may contain carrier protein/stabilizer, pH 7.2.
<b>Form/Appearance</b>	liquid
<b>Concentration</b>	batch dependent
<b>Storage</b>	The product should be stored undiluted at 4°C and should be protected from prolonged exposure to light. Do not freeze.
<b>Note</b>	For research use only
<b>Isotype</b>	Mouse IgG1, kappa
<b>Clonality</b>	Monoclonal
<b>Uniprot ID</b>	<a href="#">Q12918</a>
<b>Expiration Date</b>	12 months from date of receipt.



Human peripheral blood lymphocytes were ...