

---

## Product Datasheet

### HTRA1 Antibody (orb1271044)

**Description**

HTRA1 Antibody

**Species/Host**

Rabbit

**Reactivity**

Human, Mouse

**Conjugation**

Unconjugated

**Tested**

IF, IHC-P, WB

**Applications**
**Immunogen**

This HtrA1 antibody is generated from rabbits immunized with a KLH conjugated synthetic peptide between 116-147 amino acids from the N-terminal region of human HtrA1.

**Target**

HTRA1

**Preservatives**

Supplied in PBS with 0.09% (W/V) sodium azide.

**Form/Appearance**

Liquid

**Concentration**

batch dependent

**Storage**

Store at 4°C for three months and -20°C, stable for up to one year. As with all antibodies care should be taken to avoid repeated freeze thaw cycles. Antibodies should not be exposed to prolonged high temperatures.

**Note**

For research use only

**Application notes**

For WB starting dilution is: 1:2000  
For IHC-P starting dilution is: 1:10~50  
For IF starting dilution is: 1:10~50

**Isotype**

Rabbit Ig

**Clonality**

Polyclonal

**MW**

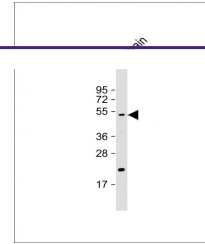
51 kDa

**Uniprot ID**
[Q92743](https://www.uniprot.org/uniprot/Q92743)
**NCBI**
[Q92743](https://www.ncbi.nlm.nih.gov/nuccore/Q92743)
**Dilution Range**

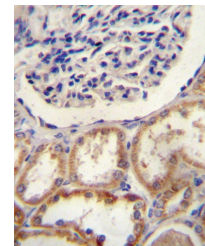
For WB starting dilution is: 1:2000  
For IHC-P starting dilution is: 1:10~50  
For IF starting dilution is: 1:10~50

**Expiration Date**

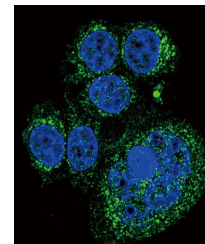
12 months from date of receipt.



Western Blot at 1:2000 dilution + mouse ...



HtrA1 Antibody immunohistochemistry anal...



Confocal immunofluorescent analysis of H...