

---

## Product Datasheet

### MIkI Antibody (orb1271040)

**Description**

MIK1 Antibody

**Species/Host**

Rabbit

**Reactivity**

Mouse

**Conjugation**

Unconjugated

**Tested**

WB

**Applications**
**Immunogen**

This Mouse MIK1 antibody is generated from rabbits immunized with a KLH conjugated synthetic peptide between 444-472 amino acids from the C-terminal region of mouse MIK1.

**Target**

MIK1

**Preservatives**

Supplied in PBS with 0.09% (W/V) sodium azide.

**Form/Appearance**

Liquid

**Concentration**

batch dependent

**Storage**

Store at 4°C for three months and -20°C, stable for up to one year. As with all antibodies care should be taken to avoid repeated freeze thaw cycles. Antibodies should not be exposed to prolonged high temperatures.

**Note**

For research use only

**Application notes**

For WB starting dilution is: 1:2000

**Isotype**

Rabbit Ig

**Clonality**

Polyclonal

**MW**

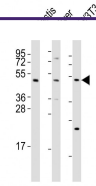
54 kDa

**Uniprot ID**
[Q9D2Y4](#)
**NCBI**
[Q9D2Y4](#)
**Dilution Range**

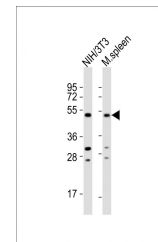
For WB starting dilution is: 1:2000

**Expiration Date**

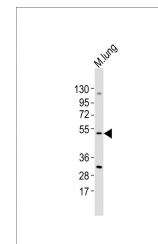
12 months from date of receipt.



Western Blot  
at 1:2000  
dilution Lane  
1: ...



Western Blot  
at 1:2000  
dilution Lane  
1: ...



Western Blot  
at 1:1000  
dilution +  
mouse ...