
Product Datasheet

BMPR1A Antibody (orb1271036)

Description

BMPR1A Antibody

Species/Host

Rabbit

Reactivity

Human

Conjugation

Unconjugated

Tested

IHC-P, WB

Applications
Immunogen

This BMPR1A antibody is generated from rabbits immunized with a KLH conjugated synthetic peptide between 166-195 amino acids from the Central region of human BMPR1A.

Target

BMPR1A

Preservatives

Supplied in PBS with 0.09% (W/V) sodium azide.

Form/Appearance

Liquid

Concentration

batch dependent

Storage

Store at 4°C for three months and -20°C, stable for up to one year. As with all antibodies care should be taken to avoid repeated freeze thaw cycles. Antibodies should not be exposed to prolonged high temperatures.

Note

For research use only

Application notes

For WB starting dilution is: 1:1000 For IHC-P starting dilution is: 1:50~100

Isotype

Rabbit Ig

Clonality

Polyclonal

MW

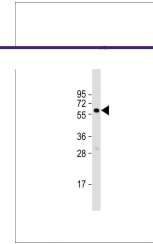
60 kDa

Uniprot ID
[P36894](#)
NCBI
[P36894](#)
Dilution Range

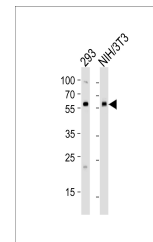
For WB starting dilution is: 1:1000 For IHC-P starting dilution is: 1:50~100

Expiration Date

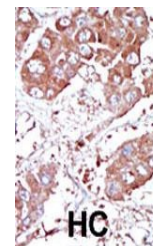
12 months from date of receipt.



Western Blot at 1:2000 dilution + Hela w...



Western blot analysis of lysates from 293...



Formalin-fixed and paraffin-embedded hum...