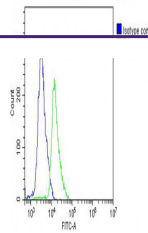
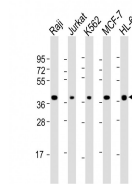

Product Datasheet

SELL Antibody (orb1271024)

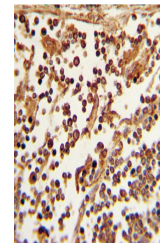
Description	SELL Antibody
Species/Host	Rabbit
Reactivity	Human
Conjugation	Unconjugated
Tested Applications	FC, IHC-P, WB
Immunogen	This SELL antibody is generated from rabbits immunized with a KLH conjugated synthetic peptide between 346-372 amino acids from the C-terminal region of human SELL.
Target	SELL
Preservatives	Supplied in PBS with 0.09% (W/V) sodium azide.
Form/Appearance	Liquid
Concentration	batch dependent
Storage	Store at 4°C for three months and -20°C, stable for up to one year. As with all antibodies care should be taken to avoid repeated freeze thaw cycles. Antibodies should not be exposed to prolonged high temperatures.
Note	For research use only
Application notes	For FACS starting dilution is: 1:25For WB starting dilution is: 1:2000For IHC-P starting dilution is: 1:10~50
Isotype	Rabbit Ig
Clonality	Polyclonal
MW	42 kDa
Uniprot ID	P14151
NCBI	P14151
Dilution Range	For FACS starting dilution is: 1:25For WB starting dilution is: 1:2000For IHC-P starting dilution is: 1:10~50
Expiration Date	12 months from date of receipt.



Overlay histogram showing Jurkat cells S...



Western Blot at 1:2000 dilution Lane 1: ...



Formalin-fixed and paraffin-embedded hum...