
Product Datasheet

SPHK1 Antibody (orb1271021)

Description

SPHK1 Antibody

Species/Host

Rabbit

Reactivity

Human, Mouse, Rat

Conjugation

Unconjugated

Tested Applications

IHC-P, WB

Immunogen

This SPHK1 antibody is generated from rabbits immunized with a KLH conjugated synthetic peptide between 286-315 amino acids from the Central region of human SPHK1.

Target

SPHK1

Preservatives

Supplied in PBS with 0.09% (W/V) sodium azide.

Form/Appearance

Liquid

Concentration

batch dependent

Storage

Store at 4°C for three months and -20°C, stable for up to one year. As with all antibodies care should be taken to avoid repeated freeze thaw cycles. Antibodies should not be exposed to prolonged high temperatures.

Note

For research use only

Application notes

For IHC-P starting dilution is: 1:25 For WB starting dilution is: 1:1000

Isotype

Rabbit Ig

Clonality

Polyclonal

MW

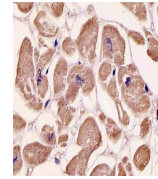
43 kDa

Uniprot ID
[Q9NYA1](#)
NCBI
[Q9NYA1](#)
Dilution Range

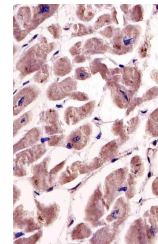
For IHC-P starting dilution is: 1:25 For WB starting dilution is: 1:1000

Expiration Date

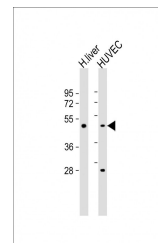
12 months from date of receipt.



Antibody staining SPHK1 in human heart t...



Antibody staining SPHK1 in human heart t...



Western Blot at 1:2000 dilution Lane 1: ...