
Product Datasheet

FGFR4 Antibody (orb1271018)

Description

FGFR4 Antibody

Species/Host

Rabbit

Reactivity

Human

Conjugation

Unconjugated

Tested Applications

FC, IF, IHC-P, WB

Immunogen

This FGFR4 antibody is generated from rabbits immunized with a KLH conjugated synthetic peptide between 24-55 amino acids from the N-terminal region of human FGFR4.

Target

FGFR4

Preservatives

Supplied in PBS with 0.09% (W/V) sodium azide.

Form/Appearance

Liquid

Concentration

batch dependent

Storage

Store at 4°C for three months and -20°C, stable for up to one year. As with all antibodies care should be taken to avoid repeated freeze thaw cycles. Antibodies should not be exposed to prolonged high temperatures.

Note

For research use only

Application notes

For WB starting dilution is: 1:1000
For FACS starting dilution is: 1:10~50
For IF starting dilution is: 1:200
For IHC-P starting dilution is: 1:50~100

Isotype

Rabbit Ig

Clonality

Polyclonal

MW

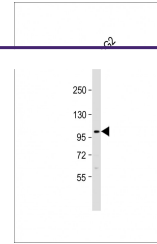
88 kDa

Uniprot ID
[P22455](#)
NCBI
[P22455](#)
Dilution Range

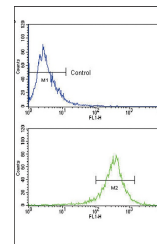
For WB starting dilution is: 1:1000
For FACS starting dilution is: 1:10~50
For IF starting dilution is: 1:200
For IHC-P starting dilution is: 1:50~100

Expiration Date

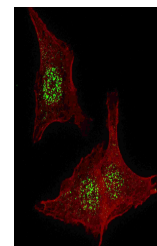
12 months from date of receipt.



Western Blot at 1:1000 dilution + HepG2 ...



Flow cytometric analysis of WiDr cells u...



Fluorescent confocal image of HeLa cells...