
Product Datasheet

NPR3 Antibody (orb1271012)

Description

NPR3 Antibody

Species/Host

Rabbit

Reactivity

Human

Conjugation

Unconjugated

Tested Applications

IF, IHC-P, WB

Immunogen

This Natriuretic Peptide Receptor C antibody is generated from rabbits immunized with a KLH conjugated synthetic peptide between 67-97 amino acids from the N-terminal region of human Natriuretic Peptide Receptor C.

Target

NPR3

Preservatives

Supplied in PBS with 0.09% (W/V) sodium azide.

Form/Appearance

Liquid

Concentration

batch dependent

Storage

Store at 4°C for three months and -20°C, stable for up to one year. As with all antibodies care should be taken to avoid repeated freeze thaw cycles. Antibodies should not be exposed to prolonged high temperatures.

Note

For research use only

Application notes

For WB starting dilution is: 1:1000
For IF starting dilution is: 1:200
For IHC-P starting dilution is: 1:10~50

Isotype

Rabbit Ig

Clonality

Polyclonal

MW

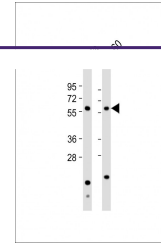
60 kDa

Uniprot ID
[P17342](#)
NCBI
[P17342](#)
Dilution Range

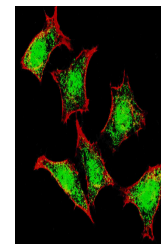
For WB starting dilution is: 1:1000
For IF starting dilution is: 1:200
For IHC-P starting dilution is: 1:10~50

Expiration Date

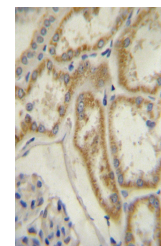
12 months from date of receipt.



Western Blot at 1:1000 dilution Lane 1: ...



Fluorescent confocal image of HeLa cells...



Natriuretic Peptide Receptor C (NPR3/ANP...)