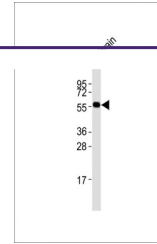
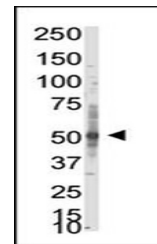

Product Datasheet

PRMT3 Antibody (orb1270979)

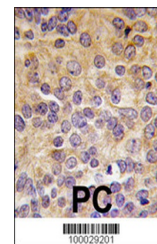
Description	PRMT3 Antibody
Species/Host	Rabbit
Reactivity	Human
Conjugation	Unconjugated
Tested Applications	IHC-P, WB
Immunogen	This PRMT3 antibody is generated from rabbits immunized with a KLH conjugated synthetic peptide between 142-173 amino acids from the N-terminal region of human PRMT3.
Target	PRMT3
Preservatives	Supplied in PBS with 0.09% (W/V) sodium azide.
Form/Appearance	Liquid
Concentration	batch dependent
Storage	Store at 4°C for three months and -20°C, stable for up to one year. As with all antibodies care should be taken to avoid repeated freeze thaw cycles. Antibodies should not be exposed to prolonged high temperatures.
Note	For research use only
Application notes	For WB starting dilution is: 1:1000 For IHC-P starting dilution is: 1:10~50
Isotype	Rabbit Ig
Clonality	Polyclonal
MW	60 kDa
Uniprot ID	O60678
NCBI	O60678
Dilution Range	For WB starting dilution is: 1:1000 For IHC-P starting dilution is: 1:10~50
Expiration Date	12 months from date of receipt.



Western Blot at 1:2000 dilution + mouse ...



Western blot analysis of anti-PRMT3 Pab ...



Formalin-fixed and paraffin-embedded hum...