
Product Datasheet

AHSG Antibody (orb1270962)

Description

AHSG Antibody

Species/Host

Rabbit

Reactivity

Human

Conjugation

Unconjugated

Tested Applications

FC, IF, IHC-P, WB

Immunogen

This AHSG antibody is generated from rabbits immunized with a KLH conjugated synthetic peptide between 247-276 amino acids from the C-terminal region of human AHSG.

Target

AHSG

Preservatives

Supplied in PBS with 0.09% (W/V) sodium azide.

Form/Appearance

Liquid

Concentration

batch dependent

Storage

Store at 4°C for three months and -20°C, stable for up to one year. As with all antibodies care should be taken to avoid repeated freeze thaw cycles. Antibodies should not be exposed to prolonged high temperatures.

Note

For research use only

Application notes

For FACS starting dilution is: 1:25
For IF starting dilution is: 1:25
For IHC-P starting dilution is: 1:25
For WB starting dilution is: 1:1000

Isotype

Rabbit Ig

Clonality

Polyclonal

MW

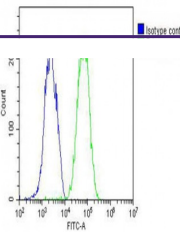
39 kDa

Uniprot ID
[P02765](#)
NCBI
[P02765](#)
Dilution Range

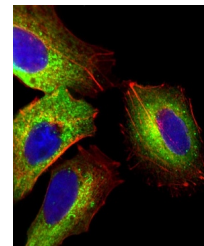
For FACS starting dilution is: 1:25
For IF starting dilution is: 1:25
For IHC-P starting dilution is: 1:25
For WB starting dilution is: 1:1000

Expiration Date

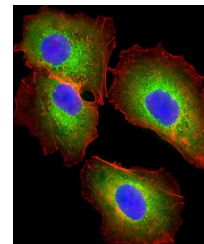
12 months from date of receipt.



Overlay histogram showing HepG2 cells st...



Immunofluorescent analysis of 4% parafor...



Immunofluorescent analysis of 4% parafor...