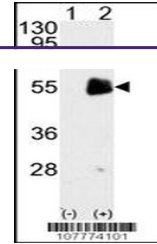
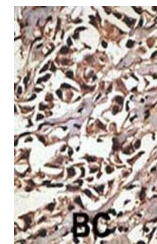

Product Datasheet

PRMT7 Antibody (orb1270960)

Description	PRMT7 Antibody
Species/Host	Rabbit
Reactivity	Human
Conjugation	Unconjugated
Tested Applications	IHC-P, WB
Immunogen	This PRMT7 antibody is generated from rabbits immunized with a KLH conjugated synthetic peptide between 660-692 amino acids from the C-terminal region of human PRMT7.
Target	PRMT7
Preservatives	Supplied in PBS with 0.09% (W/V) sodium azide.
Form/Appearance	Liquid
Concentration	batch dependent
Storage	Store at 4°C for three months and -20°C, stable for up to one year. As with all antibodies care should be taken to avoid repeated freeze thaw cycles. Antibodies should not be exposed to prolonged high temperatures.
Note	For research use only
Application notes	For WB starting dilution is: 1:1000 For IHC-P starting dilution is: 1:50~100
Isotype	Rabbit Ig
Clonality	Polyclonal
MW	78 kDa
Uniprot ID	Q9NVM4
NCBI	Q9NVM4
Dilution Range	For WB starting dilution is: 1:1000 For IHC-P starting dilution is: 1:50~100
Expiration Date	12 months from date of receipt.



Western blot analysis of PRMT7 using rabbit antibody.



Formalin-fixed and paraffin-embedded human tissue stained for PRMT7.