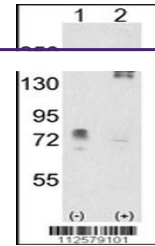

Product Datasheet

EHMT1 Antibody (orb1270923)

Description	EHMT1 Antibody
Species/Host	Rabbit
Reactivity	Human
Conjugation	Unconjugated
Tested Applications	WB
Immunogen	This EHMT1 antibody is generated from rabbits immunized with a KLH conjugated synthetic peptide between 367-396 amino acids from the Central region of human EHMT1.
Target	EHMT1
Preservatives	Supplied in PBS with 0.09% (W/V) sodium azide.
Form/Appearance	Liquid
Concentration	batch dependent
Storage	Store at 4°C for three months and -20°C, stable for up to one year. As with all antibodies care should be taken to avoid repeated freeze thaw cycles. Antibodies should not be exposed to prolonged high temperatures.
Note	For research use only
Application notes	For WB starting dilution is: 1:1000
Isotype	Rabbit Ig
Clonality	Polyclonal
MW	141 kDa
Uniprot ID	Q9H9B1
NCBI	Q9H9B1
Dilution Range	For WB starting dilution is: 1:1000
Expiration Date	12 months from date of receipt.



Western blot analysis of EHMT1 using rab...