
Product Datasheet

FGF7 Antibody (orb1270920)

Description

FGF7 Antibody

Species/Host

Rabbit

Reactivity

Human

Conjugation

Unconjugated

Tested

IHC-P, WB

Applications
Immunogen

This FGF7 antibody is generated from rabbits immunized with a KLH conjugated synthetic peptide between 57-86 amino acids from the Central region of human FGF7.

Target

FGF7

Preservatives

Supplied in PBS with 0.09% (W/V) sodium azide.

Form/Appearance

Liquid

Concentration

batch dependent

Storage

Store at 4°C for three months and -20°C, stable for up to one year. As with all antibodies care should be taken to avoid repeated freeze thaw cycles. Antibodies should not be exposed to prolonged high temperatures.

Note

For research use only

Application notes

For WB starting dilution is: 1:1000 For IHC-P starting dilution is: 1:50~100

Isotype

Rabbit Ig

Clonality

Polyclonal

MW

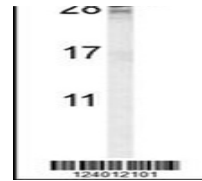
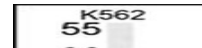
23 kDa

Uniprot ID
[P21781](#)
NCBI
[P21781](#)
Dilution Range

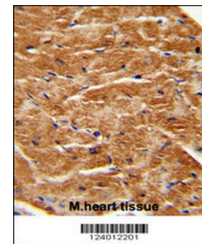
For WB starting dilution is: 1:1000 For IHC-P starting dilution is: 1:50~100

Expiration Date

12 months from date of receipt.



Western blot analysis in K562 cell line ...



FGF7 antibody immunohistochemistry analy...