
Product Datasheet

MAF1 Antibody (orb1270915)

Description

MAF1 Antibody

Species/Host

Rabbit

Reactivity

Human, Mouse

Conjugation

Unconjugated

Tested Applications

FC, IHC-P, WB

Immunogen

This MAF1 antibody is generated from rabbits immunized with a KLH conjugated synthetic peptide between 90-117 amino acids from the Central region of human MAF1.

Target

MAF1

Preservatives

Supplied in PBS with 0.09% (W/V) sodium azide.

Form/Appearance

Liquid

Concentration

batch dependent

Storage

Store at 4°C for three months and -20°C, stable for up to one year. As with all antibodies care should be taken to avoid repeated freeze thaw cycles. Antibodies should not be exposed to prolonged high temperatures.

Note

For research use only

Application notes

For WB starting dilution is: 1:1000
For IHC-P starting dilution is: 1:50~100
For FACS starting dilution is: 1:10~50

Isotype

Rabbit Ig

Clonality

Polyclonal

MW

29 kDa

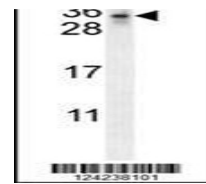
Uniprot ID
[Q9H063](#)
NCBI
[Q9H063](#)
Dilution Range

For WB starting dilution is: 1:1000
For IHC-P starting dilution is: 1:50~100
For FACS starting dilution is: 1:10~50

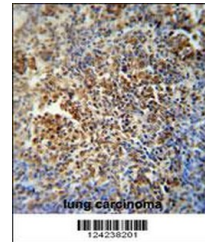
Expiration Date

12 months from date of receipt.

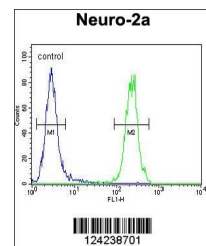
m.Neuro-2a



Western blot analysis in mouse Neuro-2a ...



MAF1 antibody immunohistochemistry analysis...



Flow cytometric analysis of Neuro-2a cells...