
Product Datasheet

NAA25 Antibody (orb1270885)

Description

NAA25 Antibody

Species/Host

Rabbit

Reactivity

Human, Mouse

Conjugation

Unconjugated

Tested

WB

Applications
Immunogen

This C12orf30 antibody is generated from rabbits immunized with a KLH conjugated synthetic peptide between 720-748 amino acids from the Central region of human C12orf30.

Target

NAA25

Preservatives

Supplied in PBS with 0.09% (W/V) sodium azide.

Form/Appearance

Liquid

Concentration

batch dependent

Storage

Store at 4°C for three months and -20°C, stable for up to one year. As with all antibodies care should be taken to avoid repeated freeze thaw cycles. Antibodies should not be exposed to prolonged high temperatures.

Note

For research use only

Application notes

For WB starting dilution is: 1:1000

Isotype

Rabbit Ig

Clonality

Polyclonal

MW

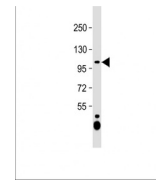
112 kDa

Uniprot ID
[Q14CX7](#)
NCBI
[Q14CX7](#)
Dilution Range

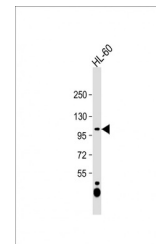
For WB starting dilution is: 1:1000

Expiration Date

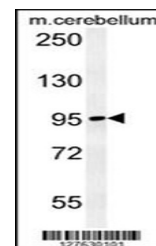
12 months from date of receipt.



Western Blot at 1:1000 dilution + HL-60 ...



Western Blot at 1:1000 dilution + HL-60 ...



Western blot analysis in mouse cerebellu...