
Product Datasheet

ISCA2 Antibody (orb1270787)

Description

ISCA2 Antibody

Species/Host

Rabbit

Reactivity

Human, Mouse

Conjugation

Unconjugated

Tested

IHC-P, WB

Applications
Immunogen

This ISCA2 antibody is generated from rabbits immunized with a KLH conjugated synthetic peptide between 72-101 amino acids from the Central region of human ISCA2.

Target

ISCA2

Preservatives

Supplied in PBS with 0.09% (W/V) sodium azide.

Form/Appearance

Liquid

Concentration

batch dependent

Storage

Store at 4°C for three months and -20°C, stable for up to one year. As with all antibodies care should be taken to avoid repeated freeze thaw cycles. Antibodies should not be exposed to prolonged high temperatures.

Note

For research use only

Application notes

For WB starting dilution is: 1:1000 For IHC-P starting dilution is: 1:50~100

Isotype

Rabbit Ig

Clonality

Polyclonal

MW

16 kDa

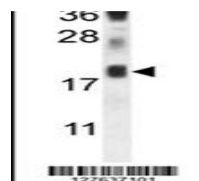
Uniprot ID
[Q86U28](#)
NCBI
[Q86U28](#)
Dilution Range

For WB starting dilution is: 1:1000 For IHC-P starting dilution is: 1:50~100

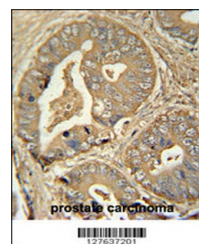
Expiration Date

12 months from date of receipt.

m.heart



Western blot analysis in mouse heart tis...



ISCA2 antibody immunohistochemistry anal...