
Product Datasheet

MB21D1 Antibody (orb1270774)

Description

MB21D1 Antibody

Species/Host

Rabbit

Reactivity

Human

Conjugation

Unconjugated

Tested Applications

FC, WB

Immunogen

This CF150 antibody is generated from rabbits immunized with a KLH conjugated synthetic peptide between 266-295 amino acids from the Central region of human CF150.

Target

MB21D1

Preservatives

Supplied in PBS with 0.09% (W/V) sodium azide.

Form/Appearance

Liquid

Concentration

batch dependent

Storage

Store at 4°C for three months and -20°C, stable for up to one year. As with all antibodies care should be taken to avoid repeated freeze thaw cycles. Antibodies should not be exposed to prolonged high temperatures.

Note

For research use only

Application notes

For FACS starting dilution is: 1:25 For WB starting dilution is: 1:500-1:1000

Isotype

Rabbit Ig

Clonality

Polyclonal

MW

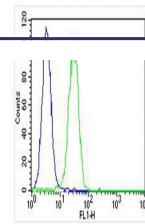
59 kDa

Uniprot ID
[Q8N884](#)
NCBI
[Q8N884](#)
Dilution Range

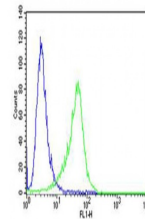
For FACS starting dilution is: 1:25 For WB starting dilution is: 1:500-1:1000

Expiration Date

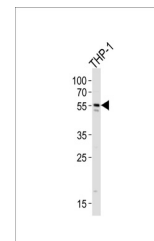
12 months from date of receipt.



Overlay histogram showing U-2OS cells st...



Flow cytometric analysis of A549 cells u...



Western blot analysis of lysate from THP...