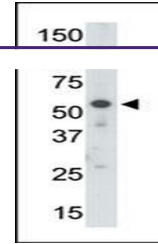
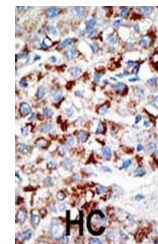

Product Datasheet

UBA3 Antibody (orb1270700)

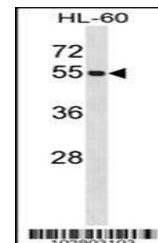
| | |
|----------------------------|--|
| Description | UBA3 Antibody |
| Species/Host | Rabbit |
| Reactivity | Human, Mouse |
| Conjugation | Unconjugated |
| Tested Applications | IHC-P, WB |
| Immunogen | This UBE1C antibody is generated from rabbits immunized with a KLH conjugated synthetic peptide between 415-445 amino acids from the C-terminal region of human UBE1C. |
| Target | UBA3 |
| Preservatives | Supplied in PBS with 0.09% (W/V) sodium azide. |
| Form/Appearance | Liquid |
| Concentration | batch dependent |
| Storage | Store at 4°C for three months and -20°C, stable for up to one year. As with all antibodies care should be taken to avoid repeated freeze thaw cycles. Antibodies should not be exposed to prolonged high temperatures. |
| Note | For research use only |
| Application notes | For WB starting dilution is: 1:1000 For IHC-P starting dilution is: 1:50~100 |
| Isotype | Rabbit Ig |
| Clonality | Polyclonal |
| MW | 52 kDa |
| Uniprot ID | Q8TBC4 |
| NCBI | Q8TBC4 |
| Dilution Range | For WB starting dilution is: 1:1000 For IHC-P starting dilution is: 1:50~100 |
| Expiration Date | 12 months from date of receipt. |



Antibody is used in Western blot to dete...



Formalin-fixed and paraffin-embedded hum...



Western blot analysis in HL-60 cell line...