

---

## Product Datasheet

### ARV1 Antibody (orb1270688)

**Description**

ARV1 Antibody

**Species/Host**

Rabbit

**Reactivity**

Human, Mouse

**Conjugation**

Unconjugated

**Tested Applications**

FC, IHC-P, WB

**Immunogen**

This ARV1 antibody is generated from rabbits immunized with a KLH conjugated synthetic peptide between 23-51 amino acids from the N-terminal region of human ARV1.

**Target**

ARV1

**Preservatives**

Supplied in PBS with 0.09% (W/V) sodium azide.

**Form/Appearance**

Liquid

**Concentration**

batch dependent

**Storage**

Store at 4°C for three months and -20°C, stable for up to one year. As with all antibodies care should be taken to avoid repeated freeze thaw cycles. Antibodies should not be exposed to prolonged high temperatures.

**Note**

For research use only

**Application notes**

For FACS starting dilution is: 1:25 For WB starting dilution is: 1:2000 For IHC-P starting dilution is: 1:50~100

**Isotype**

Rabbit Ig

**Clonality**

Polyclonal

**MW**

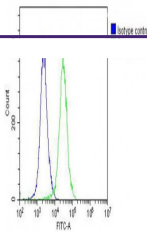
31 kDa

**Uniprot ID**
[Q9H2C2](#)
**NCBI**
[Q9H2C2](#)
**Dilution Range**

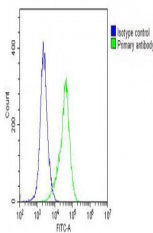
For FACS starting dilution is: 1:25 For WB starting dilution is: 1:2000 For IHC-P starting dilution is: 1:50~100

**Expiration Date**

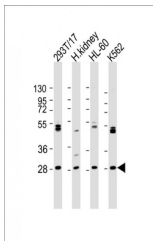
12 months from date of receipt.



Overlay histogram showing A2058 cells st...



Overlay histogram showing A2058 cells st...



Western Blot at 1:2000 dilution Lane 1: ...