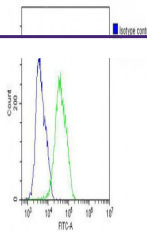
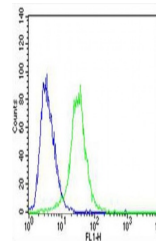

Product Datasheet

CES2 Antibody (orb1270685)

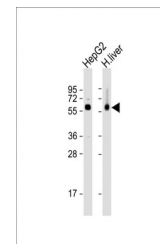
Description	CES2 Antibody
Species/Host	Rabbit
Reactivity	Human
Conjugation	Unconjugated
Tested Applications	FC, IHC-P, WB
Immunogen	This CES2 antibody is generated from rabbits immunized with a KLH conjugated synthetic peptide between 340-369 amino acids from the Central region of human CES2.
Target	CES2
Preservatives	Supplied in PBS with 0.09% (W/V) sodium azide.
Form/Appearance	Liquid
Concentration	batch dependent
Storage	Store at 4°C for three months and -20°C, stable for up to one year. As with all antibodies care should be taken to avoid repeated freeze thaw cycles. Antibodies should not be exposed to prolonged high temperatures.
Note	For research use only
Application notes	For FACS starting dilution is: 1:25For WB starting dilution is: 1:1000For IHC-P starting dilution is: 1:50~100
Isotype	Rabbit Ig
Clonality	Polyclonal
MW	62 kDa
Uniprot ID	O00748
NCBI	O00748
Dilution Range	For FACS starting dilution is: 1:25For WB starting dilution is: 1:1000For IHC-P starting dilution is: 1:50~100
Expiration Date	12 months from date of receipt.



Overlay histogram showing MCF-7 cells st...



Overlay histogram showing U-87 MG cells ...



Western Blot at 1:2000 dilution Lane 1: ...