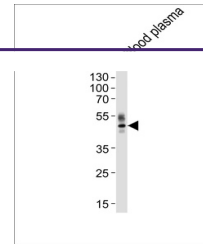
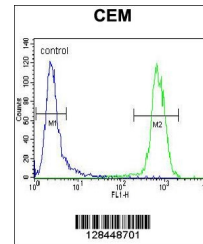

Product Datasheet

PON1 Antibody (orb1270666)

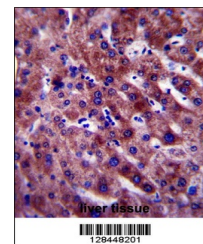
Description	PON1 Antibody
Species/Host	Rabbit
Reactivity	Human
Conjugation	Unconjugated
Tested Applications	FC, IHC-P, WB
Immunogen	This PON1 antibody is generated from rabbits immunized with a KLH conjugated synthetic peptide between 118-145 amino acids from the Central region of human PON1.
Target	PON1
Preservatives	Supplied in PBS with 0.09% (W/V) sodium azide.
Form/Appearance	Liquid
Concentration	batch dependent
Storage	Store at 4°C for three months and -20°C, stable for up to one year. As with all antibodies care should be taken to avoid repeated freeze thaw cycles. Antibodies should not be exposed to prolonged high temperatures.
Note	For research use only
Application notes	For WB starting dilution is: 1:1000For FACS starting dilution is: 1:10~50For IHC-P starting dilution is: 1:10~50
Isotype	Rabbit Ig
Clonality	Polyclonal
MW	40 kDa
Uniprot ID	P27169
NCBI	P27169
Dilution Range	For WB starting dilution is: 1:1000For FACS starting dilution is: 1:10~50For IHC-P starting dilution is: 1:10~50
Expiration Date	12 months from date of receipt.



Western blot analysis of lysate from hum...



Flow cytometric analysis of CEM cells (r...



PON1 Antibody immunohistochemistry analy...