
Product Datasheet

IL12RB2 Antibody (orb1270664)

Description

IL12RB2 Antibody

Species/Host

Rabbit

Reactivity

Human

Conjugation

Unconjugated

Tested Applications

FC, IHC-P, WB

Applications
Immunogen

This IL12_2 antibody is generated from rabbits immunized with a KLH conjugated synthetic peptide between 756-783 amino acids from the C-terminal region of human IL12_2.

Target

IL12RB2

Preservatives

Supplied in PBS with 0.09% (W/V) sodium azide.

Form/Appearance

Liquid

Concentration

batch dependent

Storage

Store at 4°C for three months and -20°C, stable for up to one year. As with all antibodies care should be taken to avoid repeated freeze thaw cycles. Antibodies should not be exposed to prolonged high temperatures.

Note

For research use only

Application notes

For FACS starting dilution is: 1:25 For WB starting dilution is: 1:1000 For IHC-P starting dilution is: 1:10~50

Isotype

Rabbit Ig

Clonality

Polyclonal

MW

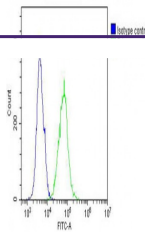
97 kDa

Uniprot ID
[Q99665](#)
NCBI
[Q99665](#)
Dilution Range

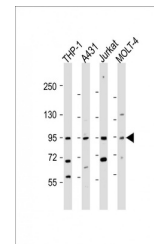
For FACS starting dilution is: 1:25 For WB starting dilution is: 1:1000 For IHC-P starting dilution is: 1:10~50

Expiration Date

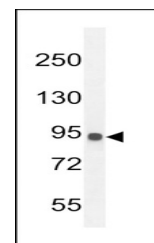
12 months from date of receipt.



Overlay histogram showing A431 cells sta...



Western Blot at 1:2000 dilution Lane 1: ...



Western blot analysis in MDA-MB435 cell ...