

---

## Product Datasheet

### SORBS1 Antibody (orb1270662)

**Description**

SORBS1 Antibody

**Species/Host**

Rabbit

**Reactivity**

Hamster, Human

**Conjugation**

Unconjugated

**Tested Applications**

IF, WB

**Immunogen**

This SORBS1 antibody is generated from rabbits immunized with a KLH conjugated synthetic peptide between 866-892 amino acids from the Central region of human SORBS1.

**Target**

SORBS1

**Preservatives**

Supplied in PBS with 0.09% (W/V) sodium azide.

**Form/Appearance**

Liquid

**Concentration**

batch dependent

**Storage**

Store at 4°C for three months and -20°C, stable for up to one year. As with all antibodies care should be taken to avoid repeated freeze thaw cycles. Antibodies should not be exposed to prolonged high temperatures.

**Note**

For research use only

**Application notes**

For WB starting dilution is: 1:1000 For IF starting dilution is: 1:10~50

**Isotype**

Rabbit Ig

**Clonality**

Polyclonal

**MW**

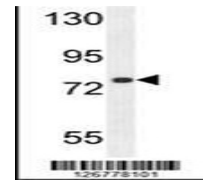
143 kDa

**Uniprot ID**
[Q9BX66](#)
**NCBI**
[Q9BX66](#)
**Dilution Range**

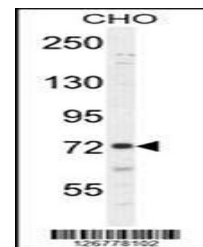
For WB starting dilution is: 1:1000 For IF starting dilution is: 1:10~50

**Expiration Date**

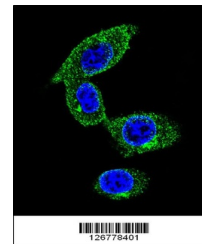
12 months from date of receipt.

 MDA-MB231  
250


Western blot analysis in MDA-MB231 cell ...



Western blot analysis in CHO cell line l...



Confocal immunofluorescent analysis of S...