
Product Datasheet

CSF2 Antibody (orb1270661)

Description

CSF2 Antibody

Species/Host

Rabbit

Reactivity

Human

Conjugation

Unconjugated

Tested

FC, IF, IHC-P, WB

Applications
Immunogen

This CSF2 antibody is generated from rabbits immunized with a KLH conjugated synthetic peptide between 59-85 amino acids from the Central region of human CSF2.

Target

CSF2

Preservatives

Supplied in PBS with 0.09% (W/V) sodium azide.

Form/Appearance

Liquid

Concentration

batch dependent

Storage

Store at 4°C for three months and -20°C, stable for up to one year. As with all antibodies care should be taken to avoid repeated freeze thaw cycles. Antibodies should not be exposed to prolonged high temperatures.

Note

For research use only

Application notes

For WB starting dilution is: 1:1000
For IHC-P starting dilution is: 1:50~100
For FACS starting dilution is: 1:10~50
For IF starting dilution is: 1:10~50

Isotype

Rabbit Ig

Clonality

Polyclonal

MW

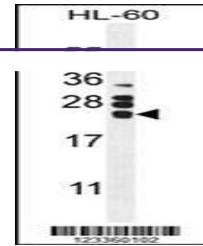
16 kDa

Uniprot ID
[P04141](#)
NCBI
[P04141](#)
Dilution Range

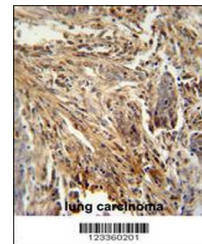
For WB starting dilution is: 1:1000
For IHC-P starting dilution is: 1:50~100
For FACS starting dilution is: 1:10~50
For IF starting dilution is: 1:10~50

Expiration Date

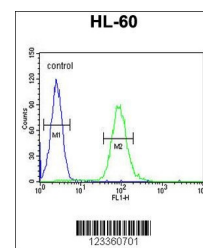
12 months from date of receipt.



Western blot analysis in HL60 cell line ...



CSF2 antibody immunohistochemistry analysis...



Flow cytometric analysis of HL-60 cells

...