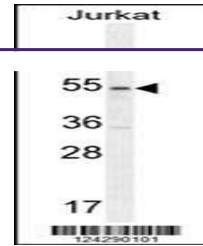
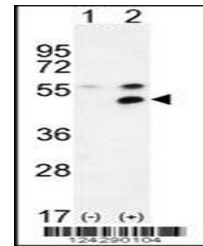

Product Datasheet

MPP1 Antibody (orb1270645)

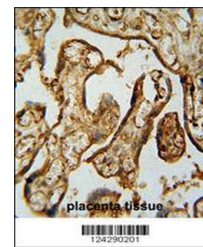
Description	MPP1 Antibody
Species/Host	Rabbit
Reactivity	Human
Conjugation	Unconjugated
Tested Applications	FC, IHC-P, WB
Immunogen	This MPP1 antibody is generated from rabbits immunized with a KLH conjugated synthetic peptide between 301-327 amino acids from the Central region of human MPP1.
Target	MPP1
Preservatives	Supplied in PBS with 0.09% (W/V) sodium azide.
Form/Appearance	Liquid
Concentration	batch dependent
Storage	Store at 4°C for three months and -20°C, stable for up to one year. As with all antibodies care should be taken to avoid repeated freeze thaw cycles. Antibodies should not be exposed to prolonged high temperatures.
Note	For research use only
Application notes	For WB starting dilution is: 1:1000For IHC-P starting dilution is: 1:50~100For FACS starting dilution is: 1:10~50
Isotype	Rabbit Ig
Clonality	Polyclonal
MW	52 kDa
Uniprot ID	Q00013
NCBI	Q00013
Dilution Range	For WB starting dilution is: 1:1000For IHC-P starting dilution is: 1:50~100For FACS starting dilution is: 1:10~50
Expiration Date	12 months from date of receipt.



Western blot analysis in Jurkat cell lin...



Western blot analysis of MPP1 using rabb...



MPP1 Antibody immunohistochemistry analy...