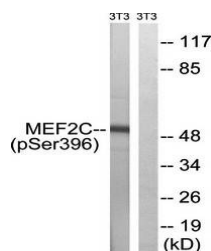


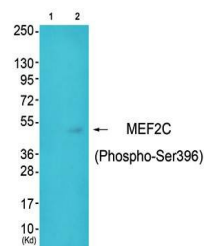
Product Datasheet

MEF2C (phospho-Ser396) antibody (orb127059)

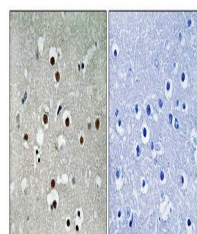
Description	Rabbit Polyclonal to MEF2C (phospho-Ser396).
Species/Host	Rabbit
Reactivity	Human, Mouse
Conjugation	Unconjugated
Tested Applications	IHC, WB
Immunogen	C-terminal
Concentration	1mg/ml
Storage	Maintain refrigerated at 2-8°C for up to 2 weeks. For long term storage store at -20°C in small aliquots to prevent freeze-thaw cycles.
Note	For research use only
Clonality	Polyclonal
Uniprot ID	Q06413
Dilution Range	WB: 1:500-1:3000, IHC-P: 1:50-1:100, ELISA: 1:1000
Expiration Date	12 months from date of receipt.



Western blot analysis of extracts from 3...



Western blot analysis of extracts from c...



Immunohistochemical analysis of formalin...