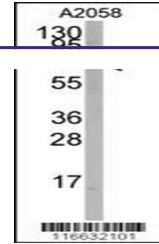
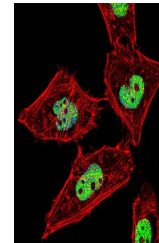

Product Datasheet

RORA Antibody (orb1270535)

Description	RORA Antibody
Species/Host	Rabbit
Reactivity	Human
Conjugation	Unconjugated
Tested Applications	IF, WB
Immunogen	This RORA antibody is generated from rabbits immunized with a KLH conjugated synthetic peptide between 193-222 amino acids from human RORA.
Target	RORA
Preservatives	Supplied in PBS with 0.09% (W/V) sodium azide.
Form/Appearance	Liquid
Concentration	batch dependent
Storage	Store at 4°C for three months and -20°C, stable for up to one year. As with all antibodies care should be taken to avoid repeated freeze thaw cycles. Antibodies should not be exposed to prolonged high temperatures.
Note	For research use only
Application notes	For WB starting dilution is: 1:1000For IF starting dilution is: 1:10~50
Isotype	Rabbit Ig
Clonality	Polyclonal
MW	59 kDa
Uniprot ID	P35398
NCBI	P35398
Dilution Range	For WB starting dilution is: 1:1000For IF starting dilution is: 1:10~50
Expiration Date	12 months from date of receipt.



Western blot analysis of anti-RORA Antib...



Fluorescent confocal image of HeLa cell ...