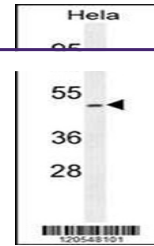

Product Datasheet

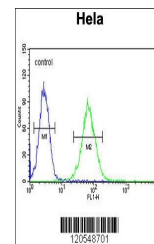
SMYD1 Antibody (orb1270482)

Description	SMYD1 Antibody
Species/Host	Rabbit
Reactivity	Human
Conjugation	Unconjugated
Tested Applications	FC, WB
Immunogen	This SMYD1 antibody is generated from rabbits immunized with a KLH conjugated synthetic peptide between 420-449 amino acids from the C-terminal region of human SMYD1.
Target	SMYD1
Preservatives	Supplied in PBS with 0.09% (W/V) sodium azide.
Form/Appearance	Liquid
Concentration	batch dependent
Storage	Store at 4°C for three months and -20°C, stable for up to one year. As with all antibodies care should be taken to avoid repeated freeze thaw cycles. Antibodies should not be exposed to prolonged high temperatures.
Note	For research use only
Application notes	For WB starting dilution is: 1:1000 For FACS starting dilution is: 1:10~50
Isotype	Rabbit Ig
Clonality	Polyclonal
MW	57 kDa
Uniprot ID	Q8NB12
NCBI	Q8NB12
Dilution Range	For WB starting dilution is: 1:1000 For FACS starting dilution is: 1:10~50
Expiration Date	12 months from date of receipt.



Western blot analysis in HeLa cell line

...



Flow cytometric analysis of HeLa cells (...)