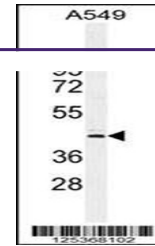


---

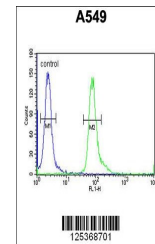
## Product Datasheet

### NOL4L Antibody (orb1270460)

|                            |  |
|----------------------------|--|
| <b>Description</b>         | NOL4L Antibody   |
| <b>Species/Host</b>        | Rabbit   |
| <b>Reactivity</b>          | Human  |
| <b>Conjugation</b>         | Unconjugated   |
| <b>Tested Applications</b> | FC, WB   |
| <b>Immunogen</b>           | This CT112 antibody is generated from rabbits immunized with a KLH conjugated synthetic peptide between 210-239 amino acids from the Central region of human CT112.  |
| <b>Target</b>              | NOL4L  |
| <b>Preservatives</b>       | Supplied in PBS with 0.09% (W/V) sodium azide.   |
| <b>Form/Appearance</b>     | Liquid   |
| <b>Concentration</b>       | batch dependent  |
| <b>Storage</b>             | Store at 4°C for three months and -20°C, stable for up to one year. As with all antibodies care should be taken to avoid repeated freeze thaw cycles. Antibodies should not be exposed to prolonged high temperatures. |
| <b>Note</b>                | For research use only  |
| <b>Application notes</b>   | For WB starting dilution is: 1:1000 For FACS starting dilution is: 1:10~50   |
| <b>Isotype</b>             | Rabbit Ig  |
| <b>Clonality</b>           | Polyclonal   |
| <b>MW</b>                  | 47 kDa   |
| <b>Uniprot ID</b>          | <a href="#">Q96MY1</a>   |
| <b>NCBI</b>                | <a href="#">Q96MY1</a>   |
| <b>Dilution Range</b>      | For WB starting dilution is: 1:1000 For FACS starting dilution is: 1:10~50   |
| <b>Expiration Date</b>     | 12 months from date of receipt.  |



Western blot analysis in A549 cell line ...



Flow cytometric analysis of A549 cells (...)