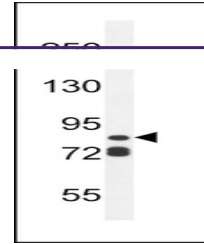
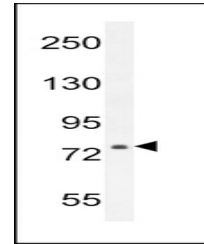

Product Datasheet

ASAP3 Antibody (orb1270454)

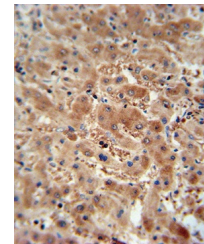
Description	ASAP3 Antibody
Species/Host	Rabbit
Reactivity	Hamster, Human
Conjugation	Unconjugated
Tested Applications	IHC-P, WB
Immunogen	This ASAP3 antibody is generated from rabbits immunized with a KLH conjugated synthetic peptide between 26-54 amino acids from the N-terminal region of human ASAP3.
Target	ASAP3
Preservatives	Supplied in PBS with 0.09% (W/V) sodium azide.
Form/Appearance	Liquid
Concentration	batch dependent
Storage	Store at 4°C for three months and -20°C, stable for up to one year. As with all antibodies care should be taken to avoid repeated freeze thaw cycles. Antibodies should not be exposed to prolonged high temperatures.
Note	For research use only
Application notes	For WB starting dilution is: 1:1000For IHC-P starting dilution is: 1:10~50
Isotype	Rabbit Ig
Clonality	Polyclonal
MW	99 kDa
Uniprot ID	Q8TDY4
NCBI	Q8TDY4
Dilution Range	For WB starting dilution is: 1:1000For IHC-P starting dilution is: 1:10~50
Expiration Date	12 months from date of receipt.



Western blot analysis in ZR-75-1 cell li...



Western blot analysis in CHO cell line I...



ASAP3 antibody immunohistochemistry anal...