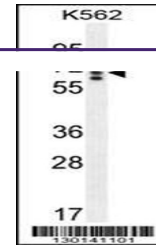
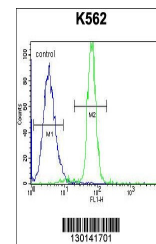

Product Datasheet

CLIP3 Antibody (orb1270393)

Description	CLIP3 Antibody
Species/Host	Rabbit
Reactivity	Human
Conjugation	Unconjugated
Tested Applications	FC, WB
Immunogen	This CLIP3 antibody is generated from rabbits immunized with a KLH conjugated synthetic peptide between 368-396 amino acids from the C-terminal region of human CLIP3.
Target	CLIP3
Preservatives	Supplied in PBS with 0.09% (W/V) sodium azide.
Form/Appearance	Liquid
Concentration	batch dependent
Storage	Store at 4°C for three months and -20°C, stable for up to one year. As with all antibodies care should be taken to avoid repeated freeze thaw cycles. Antibodies should not be exposed to prolonged high temperatures.
Note	For research use only
Application notes	For WB starting dilution is: 1:1000 For FACS starting dilution is: 1:10~50
Isotype	Rabbit Ig
Clonality	Polyclonal
MW	60 kDa
Uniprot ID	Q96DZ5
NCBI	Q96DZ5
Dilution Range	For WB starting dilution is: 1:1000 For FACS starting dilution is: 1:10~50
Expiration Date	12 months from date of receipt.



Western blot analysis in K562 cell line ...



Flow cytometric analysis of K562 cells (...)