

---

## Product Datasheet

### CYP2B6 Antibody (orb1270378)

**Description**

CYP2B6 Antibody

**Species/Host**

Rabbit

**Reactivity**

Human

**Conjugation**

Unconjugated

**Tested Applications**

IF, IHC-P, WB

**Immunogen**

This CYP2B6 antibody is generated from rabbits immunized with a KLH conjugated synthetic peptide between 235-263 amino acids from the Central region of human CYP2B6.

**Target**

CYP2B6

**Preservatives**

Supplied in PBS with 0.09% (W/V) sodium azide.

**Form/Appearance**

Liquid

**Concentration**

batch dependent

**Storage**

Store at 4°C for three months and -20°C, stable for up to one year. As with all antibodies care should be taken to avoid repeated freeze thaw cycles. Antibodies should not be exposed to prolonged high temperatures.

**Note**

For research use only

**Application notes**

For WB starting dilution is: 1:2000 For IHC-P starting dilution is: 1:10~50 For IF starting dilution is: 1:10~50

**Isotype**

Rabbit Ig

**Clonality**

Polyclonal

**MW**

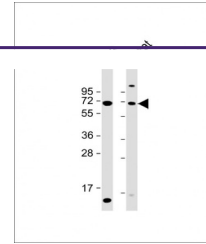
56 kDa

**Uniprot ID**
[P20813](#)
**NCBI**
[P20813](#)
**Dilution Range**

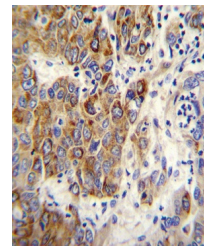
For WB starting dilution is: 1:2000 For IHC-P starting dilution is: 1:10~50 For IF starting dilution is: 1:10~50

**Expiration Date**

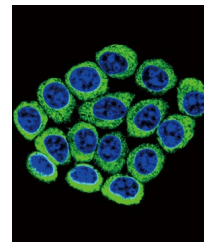
12 months from date of receipt.



Western Blot at  
1:2000 dilution Lane  
1: ...



CYP2B6 Antibody  
immunohistochemistry  
ana...



Confocal  
immunofluorescent  
analysis of C...