
Product Datasheet

CAD Antibody (orb1270371)

Description

CAD Antibody

Species/Host

Rabbit

Reactivity

Human

Conjugation

Unconjugated

Tested Applications

FC, IHC-P, WB

Immunogen

This CAD antibody is generated from rabbits immunized with a KLH conjugated synthetic peptide between 780-809 amino acids from the Central region of human CAD.

Target

CAD

Preservatives

Supplied in PBS with 0.09% (W/V) sodium azide.

Form/Appearance

Liquid

Concentration

batch dependent

Storage

Store at 4°C for three months and -20°C, stable for up to one year. As with all antibodies care should be taken to avoid repeated freeze thaw cycles. Antibodies should not be exposed to prolonged high temperatures.

Note

For research use only

Application notes

For FACS starting dilution is: 1:25 For IHC-P starting dilution is: 1:25 For WB starting dilution is: 1:2000

Isotype

Rabbit Ig

Clonality

Polyclonal

MW

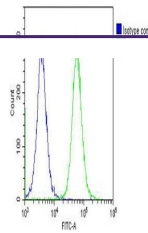
243 kDa

Uniprot ID
[P27708](#)
NCBI
[P27708](#)
Dilution Range

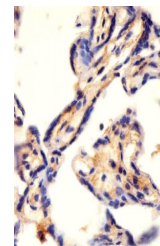
For FACS starting dilution is: 1:25 For IHC-P starting dilution is: 1:25 For WB starting dilution is: 1:2000

Expiration Date

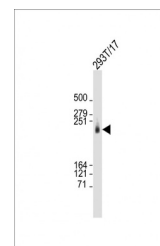
12 months from date of receipt.



Overlay histogram showing Hela cells sta...



Antibody staining CAD in human placenta ...



Western Blot at 1:2000 dilution + 293T/1...