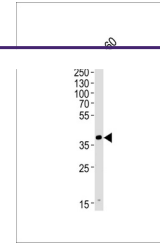
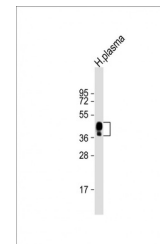

Product Datasheet

HPR Antibody (orb1270370)

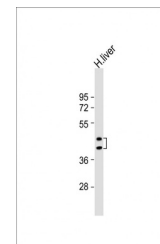
Description	HPR Antibody
Species/Host	Rabbit
Reactivity	Human
Conjugation	Unconjugated
Tested Applications	IHC-P, WB
Immunogen	This HPR antibody is generated from rabbits immunized with a KLH conjugated synthetic peptide between 212-240 amino acids from the Central region of human HPR.
Target	HPR
Preservatives	Supplied in PBS with 0.09% (W/V) sodium azide.
Form/Appearance	Liquid
Concentration	batch dependent
Storage	Store at 4°C for three months and -20°C, stable for up to one year. As with all antibodies care should be taken to avoid repeated freeze thaw cycles. Antibodies should not be exposed to prolonged high temperatures.
Note	For research use only
Application notes	For WB starting dilution is: 1:2000 For IHC-P starting dilution is: 1:50~100
Isotype	Rabbit Ig
Clonality	Polyclonal
MW	39 kDa
Uniprot ID	P00739
NCBI	P00739
Dilution Range	For WB starting dilution is: 1:2000 For IHC-P starting dilution is: 1:50~100
Expiration Date	12 months from date of receipt.



Western blot analysis of lysate from HL-60



Western Blot at 1:2000 dilution + human ...



Western Blot at 1:8000 dilution + human ...