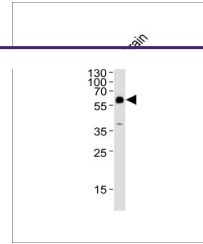
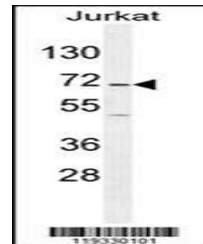

Product Datasheet

GAD2 Antibody (orb1270363)

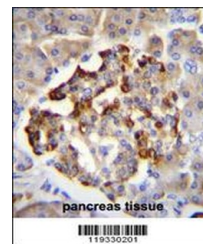
Description	GAD2 Antibody
Species/Host	Rabbit
Reactivity	Human
Conjugation	Unconjugated
Tested Applications	IF, IHC-P, WB
Immunogen	This GAD2 antibody is generated from rabbits immunized with a KLH conjugated synthetic peptide between 109-138 amino acids from the Central region of human GAD2.
Target	GAD2
Preservatives	Supplied in PBS with 0.09% (W/V) sodium azide.
Form/Appearance	Liquid
Concentration	batch dependent
Storage	Store at 4°C for three months and -20°C, stable for up to one year. As with all antibodies care should be taken to avoid repeated freeze thaw cycles. Antibodies should not be exposed to prolonged high temperatures.
Note	For research use only
Application notes	For WB starting dilution is: 1:1000For IHC-P starting dilution is: 1:50~100For IF starting dilution is: 1:10~50
Isotype	Rabbit Ig
Clonality	Polyclonal
MW	65 kDa
Uniprot ID	Q05329
NCBI	Q05329
Dilution Range	For WB starting dilution is: 1:1000For IHC-P starting dilution is: 1:50~100For IF starting dilution is: 1:10~50
Expiration Date	12 months from date of receipt.



Western blot analysis of lysate from rat...



Western blot analysis in Jurkat cell line...



GAD2 Antibody immunohistochemistry analysis...