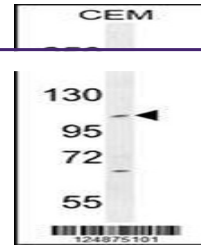
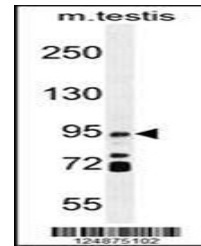

Product Datasheet

IFT88 Antibody (orb1270346)

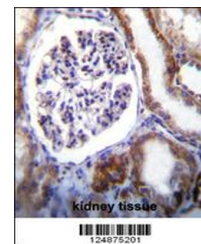
Description	IFT88 Antibody
Species/Host	Rabbit
Reactivity	Human, Mouse
Conjugation	Unconjugated
Tested Applications	IF, IHC-P, WB
Immunogen	This IFT88 antibody is generated from rabbits immunized with a KLH conjugated synthetic peptide between 791-820 amino acids from the C-terminal region of human IFT88.
Target	IFT88
Preservatives	Supplied in PBS with 0.09% (W/V) sodium azide.
Form/Appearance	Liquid
Concentration	batch dependent
Storage	Store at 4°C for three months and -20°C, stable for up to one year. As with all antibodies care should be taken to avoid repeated freeze thaw cycles. Antibodies should not be exposed to prolonged high temperatures.
Note	For research use only
Application notes	For WB starting dilution is: 1:1000For IHC-P starting dilution is: 1:10~50For IF starting dilution is: 1:10~50
Isotype	Rabbit Ig
Clonality	Polyclonal
MW	94 kDa
Uniprot ID	Q13099
NCBI	Q13099
Dilution Range	For WB starting dilution is: 1:1000For IHC-P starting dilution is: 1:10~50For IF starting dilution is: 1:10~50
Expiration Date	12 months from date of receipt.



Western blot analysis in CEM cell line I...



Western blot analysis in mouse testis ti...



IFT88 Antibody immunohistochemistry anal...