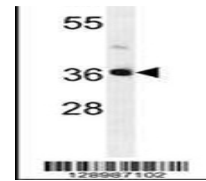
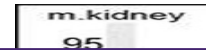


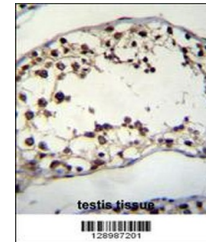
Product Datasheet

PIH1D2 Antibody (orb1270251)

Description	PIH1D2 Antibody
Species/Host	Rabbit
Reactivity	Mouse
Conjugation	Unconjugated
Tested Applications	IHC-P, WB
Immunogen	This PIH1D2 antibody is generated from rabbits immunized with a KLH conjugated synthetic peptide between 220-249 amino acids from the C-terminal region of human PIH1D2.
Target	PIH1D2
Preservatives	Supplied in PBS with 0.09% (W/V) sodium azide.
Form/Appearance	Liquid
Concentration	batch dependent
Storage	Store at 4°C for three months and -20°C, stable for up to one year. As with all antibodies care should be taken to avoid repeated freeze thaw cycles. Antibodies should not be exposed to prolonged high temperatures.
Note	For research use only
Application notes	For WB starting dilution is: 1:1000For IHC-P starting dilution is: 1:50~100
Isotype	Rabbit Ig
Clonality	Polyclonal
MW	36 kDa
Uniprot ID	Q8WWB5
NCBI	Q8WWB5
Dilution Range	For WB starting dilution is: 1:1000For IHC-P starting dilution is: 1:50~100
Expiration Date	12 months from date of receipt.



Western blot analysis in mouse kidney ti...



PIH1D2 Antibody immunohistochemistry ana...