

---

## Product Datasheet

### HSD11B1L Antibody (orb1270145)

**Description**

HSD11B1L Antibody

**Species/Host**

Rabbit

**Reactivity**

Human

**Conjugation**

Unconjugated

**Tested**

IF, IHC-P, WB

**Applications**
**Immunogen**

This HSD11B1L antibody is generated from rabbits immunized with a KLH conjugated synthetic peptide between 256-283 amino acids from the C-terminal region of human HSD11B1L.

**Target**

HSD11B1L

**Preservatives**

Supplied in PBS with 0.09% (W/V) sodium azide.

**Form/Appearance**

Liquid

**Concentration**

batch dependent

**Storage**

Store at 4°C for three months and -20°C, stable for up to one year. As with all antibodies care should be taken to avoid repeated freeze thaw cycles. Antibodies should not be exposed to prolonged high temperatures.

**Note**

For research use only

**Application notes**

For WB starting dilution is: 1:1000 For IHC-P starting dilution is: 1:10~50 For IF starting dilution is: 1:10~50

**Isotype**

Rabbit Ig

**Clonality**

Polyclonal

**MW**

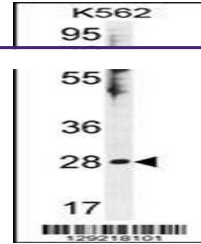
34 kDa

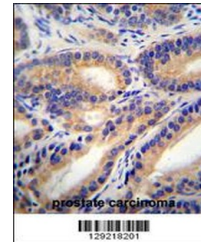
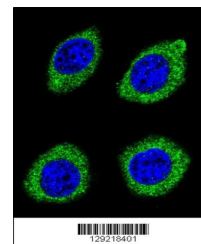
**Uniprot ID**
[Q7Z5J1](#)
**NCBI**
[Q7Z5J1](#)
**Dilution Range**

For WB starting dilution is: 1:1000 For IHC-P starting dilution is: 1:10~50 For IF starting dilution is: 1:10~50

**Expiration Date**

12 months from date of receipt.



 Western blot analysis  
in K562 cell line ...

 HSD11B1L Antibody  
immunohistochemistry  
a...

 Confocal  
immunofluorescent  
analysis of H...