
Product Datasheet

EFNB2 Antibody (orb1270053)

Description

EFNB2 Antibody

Species/Host

Rabbit

Reactivity

Human

Conjugation

Unconjugated

Tested Applications

IF, IHC-P, WB

Immunogen

This EFNB2 antibody is generated from rabbits immunized with a KLH conjugated synthetic peptide between 157-186 amino acids from the Central region of human EFNB2.

Target

EFNB2

Preservatives

Supplied in PBS with 0.09% (W/V) sodium azide.

Form/Appearance

Liquid

Concentration

batch dependent

Storage

Store at 4°C for three months and -20°C, stable for up to one year. As with all antibodies care should be taken to avoid repeated freeze thaw cycles. Antibodies should not be exposed to prolonged high temperatures.

Note

For research use only

Application notes

For IHC-P starting dilution is: 1:10~50
For WB starting dilution is: 1:1000
For IF starting dilution is: 1:10~50

Isotype

Rabbit Ig

Clonality

Polyclonal

MW

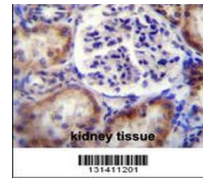
37 kDa

Uniprot ID
[P52799](#)
NCBI
[P52799](#)
Dilution Range

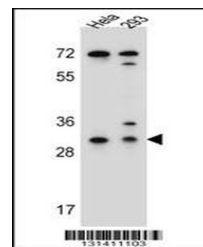
For IHC-P starting dilution is: 1:10~50
For WB starting dilution is: 1:1000
For IF starting dilution is: 1:10~50

Expiration Date

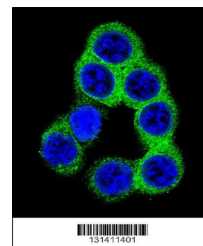
12 months from date of receipt.



EFNB2 Antibody immunohistochemistry anal...



Western blot analysis in HeLa, 293 cell ...



Confocal immunofluorescent analysis of E...