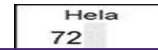
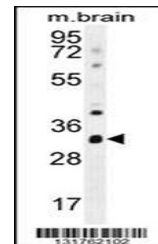

Product Datasheet

CYC1 Antibody (orb1270048)

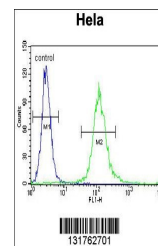
Description	CYC1 Antibody
Species/Host	Rabbit
Reactivity	Human, Mouse
Conjugation	Unconjugated
Tested Applications	FC, WB
Immunogen	This CYC1 antibody is generated from rabbits immunized with a KLH conjugated synthetic peptide between 263-291 amino acids from the C-terminal region of human CYC1.
Target	CYC1
Preservatives	Supplied in PBS with 0.09% (W/V) sodium azide.
Form/Appearance	Liquid
Concentration	batch dependent
Storage	Store at 4°C for three months and -20°C, stable for up to one year. As with all antibodies care should be taken to avoid repeated freeze thaw cycles. Antibodies should not be exposed to prolonged high temperatures.
Note	For research use only
Application notes	For WB starting dilution is: 1:1000 For FACS starting dilution is: 1:10~50
Isotype	Rabbit Ig
Clonality	Polyclonal
MW	35 kDa
Uniprot ID	P08574
NCBI	P08574
Dilution Range	For WB starting dilution is: 1:1000 For FACS starting dilution is: 1:10~50
Expiration Date	12 months from date of receipt.



Western blot analysis in HeLa cell line ...



Western blot analysis in mouse brain tis...



Flow cytometric analysis of HeLa cells (...)