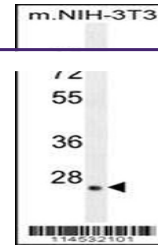
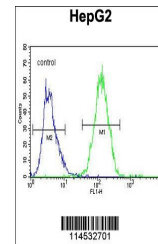

Product Datasheet

GFER Antibody (orb1270041)

Description	GFER Antibody
Species/Host	Rabbit
Reactivity	Mouse
Conjugation	Unconjugated
Tested Applications	FC, WB
Immunogen	This GFER antibody is generated from rabbits immunized with a KLH conjugated synthetic peptide between 173-202 amino acids from the C-terminal region of human GFER.
Target	GFER
Preservatives	Supplied in PBS with 0.09% (W/V) sodium azide.
Form/Appearance	Liquid
Concentration	batch dependent
Storage	Store at 4°C for three months and -20°C, stable for up to one year. As with all antibodies care should be taken to avoid repeated freeze thaw cycles. Antibodies should not be exposed to prolonged high temperatures.
Note	For research use only
Application notes	For WB starting dilution is: 1:1000 For FACS starting dilution is: 1:10~50
Isotype	Rabbit Ig
Clonality	Polyclonal
MW	23 kDa
Uniprot ID	P55789
NCBI	P55789
Dilution Range	For WB starting dilution is: 1:1000 For FACS starting dilution is: 1:10~50
Expiration Date	12 months from date of receipt.



Western blot analysis in mouse NIH-3T3 c...



Flow cytometric analysis of HepG2 cells

...