
Product Datasheet

ATG16L2 Antibody (orb1270026)

Description

ATG16L2 Antibody

Species/Host

Rabbit

Reactivity

Human

Conjugation

Unconjugated

Tested

IHC-P, WB

Applications
Immunogen

This ATG16L2 antibody is generated from rabbits immunized with a KLH conjugated synthetic peptide between 277-304 amino acids from the Central region of human ATG16L2.

Target

ATG16L2

Preservatives

Supplied in PBS with 0.09% (W/V) sodium azide.

Form/Appearance

Liquid

Concentration

batch dependent

Storage

Store at 4°C for three months and -20°C, stable for up to one year. As with all antibodies care should be taken to avoid repeated freeze thaw cycles. Antibodies should not be exposed to prolonged high temperatures.

Note

For research use only

Application notes

For WB starting dilution is: 1:1000
For IHC-P starting dilution is: 1:50~100

Isotype

Rabbit Ig

Clonality

Polyclonal

MW

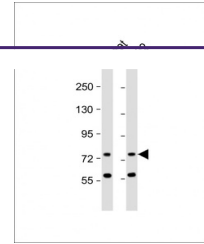
69 kDa

Uniprot ID
[Q8NAA4](#)
NCBI
[Q8NAA4](#)
Dilution Range

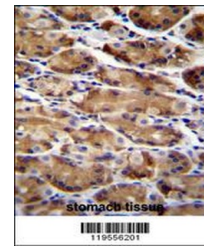
For WB starting dilution is: 1:1000
For IHC-P starting dilution is: 1:50~100

Expiration Date

12 months from date of receipt.



Western Blot at
1:1000 dilution Lane
1: ...



AT
immunohistochemistry
analysis in form...